

MONTHLY MEMBERSHIP PROGRESS REPORT

District 3233G1

Results as of: 6/30/2024

GMT:

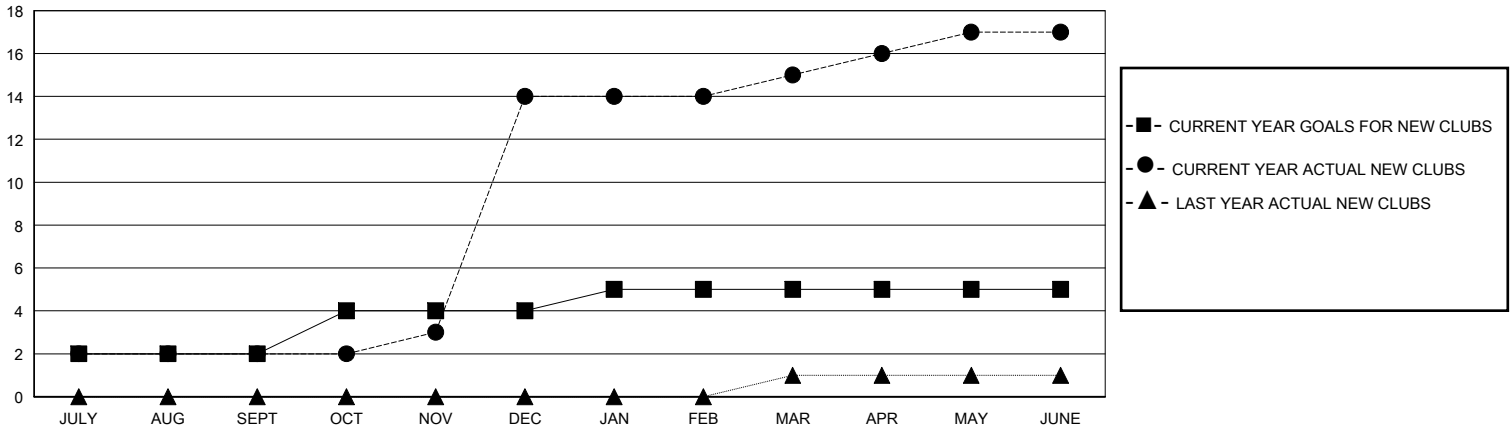
LOCATION INDIA

GMT CA

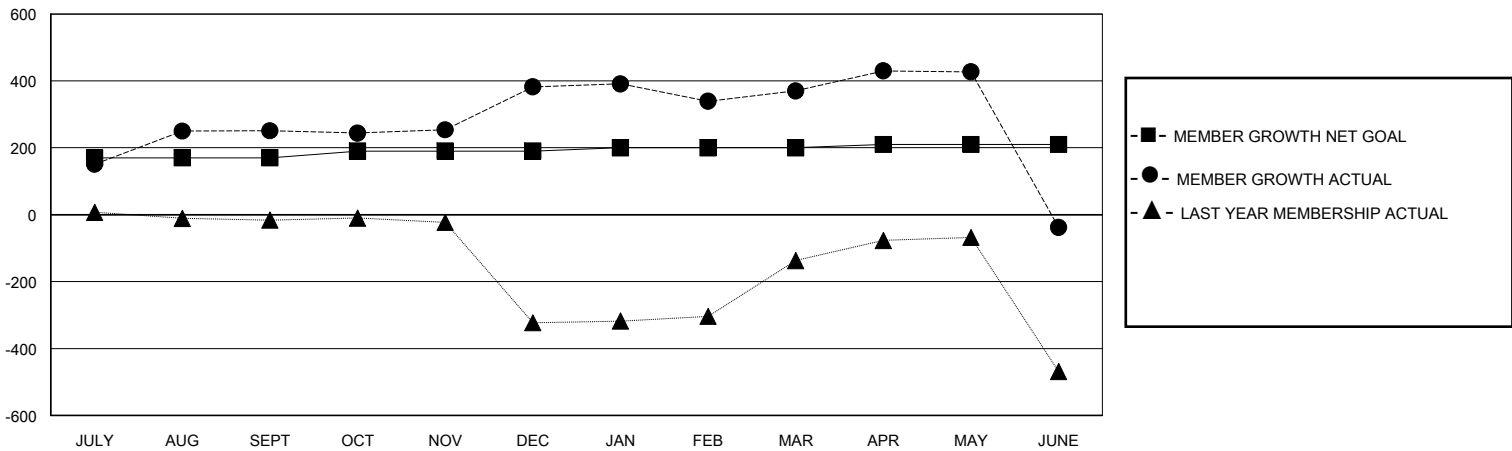
Clubs			
RESULTS FOR 2023-2024			
QUARTER	NEW CLUB GOAL	NEW CLUBS	DROPPED CLUBS
JULY/AUG/SEPT	2	2	0
OCT/NOV/DEC	2	12	2
JAN/FEB/MAR	1	1	3
APR/MAY/JUNE	0	2	0

Members			
RESULTS FOR 2023-2024			
QUARTER	MEMBER GROWTH NET GOAL	MEMBER GROWTH ACTUAL	DROPPED MEMBERS ACTUAL (including transfers)
JULY/AUG/SEPT	170	469	101
OCT/NOV/DEC	20	277	133
JAN/FEB/MAR	10	82	85
APR/MAY/JUNE	10	124	504

GOALS AND ACTUAL NEW CLUBS CUMULATIVE



GOALS AND ACTUAL MEMBERS CUMULATIVE



DROPPED CLUBS: 5	92 CLUBS OF 206 ADDED 1 OR MORE NEW MEMBERS	GENDER DISTRIBUTION	
		MALE 2,101 (63.21%)	FEMALE 1,223 (36.79%)
DROPPED MEMBERS		CLICK HERE FOR CUMULATIVE MEMBERSHIP DATA	TOTAL FAMILY UNIT MEMBERS 1,329
DECEASED 15	CLUB CANCELLED 80		FAMILY MEMBERS PAYING HALF DUES 811
OTHER 728	TOTAL 823		